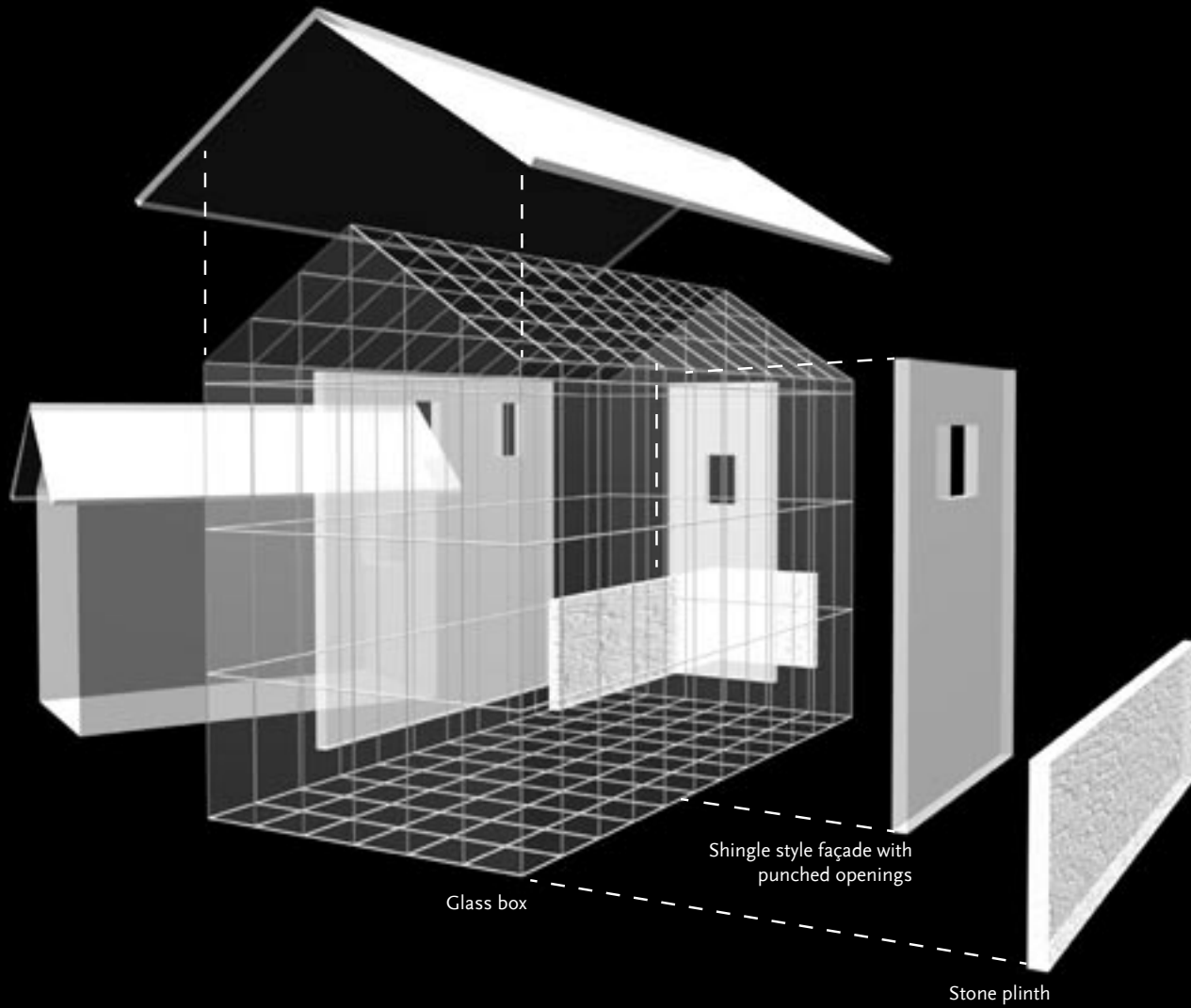


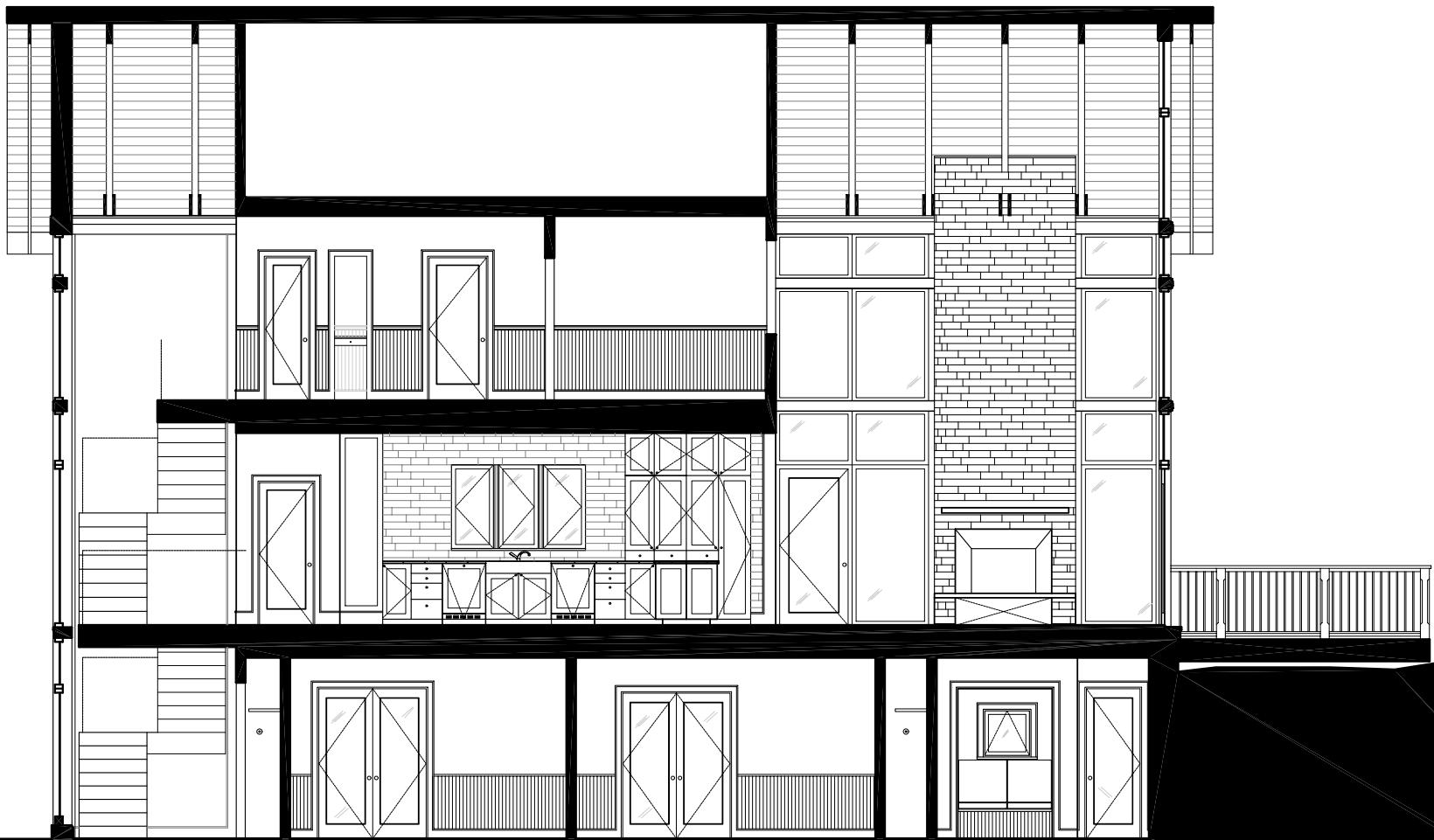


Brown Michigan Residence



This project is a 5,000 sf vacation home in a private association in Northern Michigan. The house is on a small site abutting a steep dune and state park to the south with another house closely adjacent to the west. The house is sited in order to open-up the view into the state park to the south while mitigating the impact of the dune and providing privacy from the house to the west. It is split into two volumes and skewed to create a private courtyard between the two volumes and the dune utilizing the natural contours of the site.





Section through family room and children's rooms



Entry courtyard: Shingle style façade with punched openings and exposed void of modern stair



Rear courtyard: Traditional bedroom façade screens open private courtyard from neighboring cottages



Daytime view of rear elevation



Entrance hall: Suspended stair ascending up through the trees



Living space: View from upper floor looking down on living space



Dining room: Interior view through living space



Kitchen: View from living space with suspended stair in background



Master bathroom: Axial view down corridor



Evening view of rear elevation